

Specifications:  
 Make-Before-Break

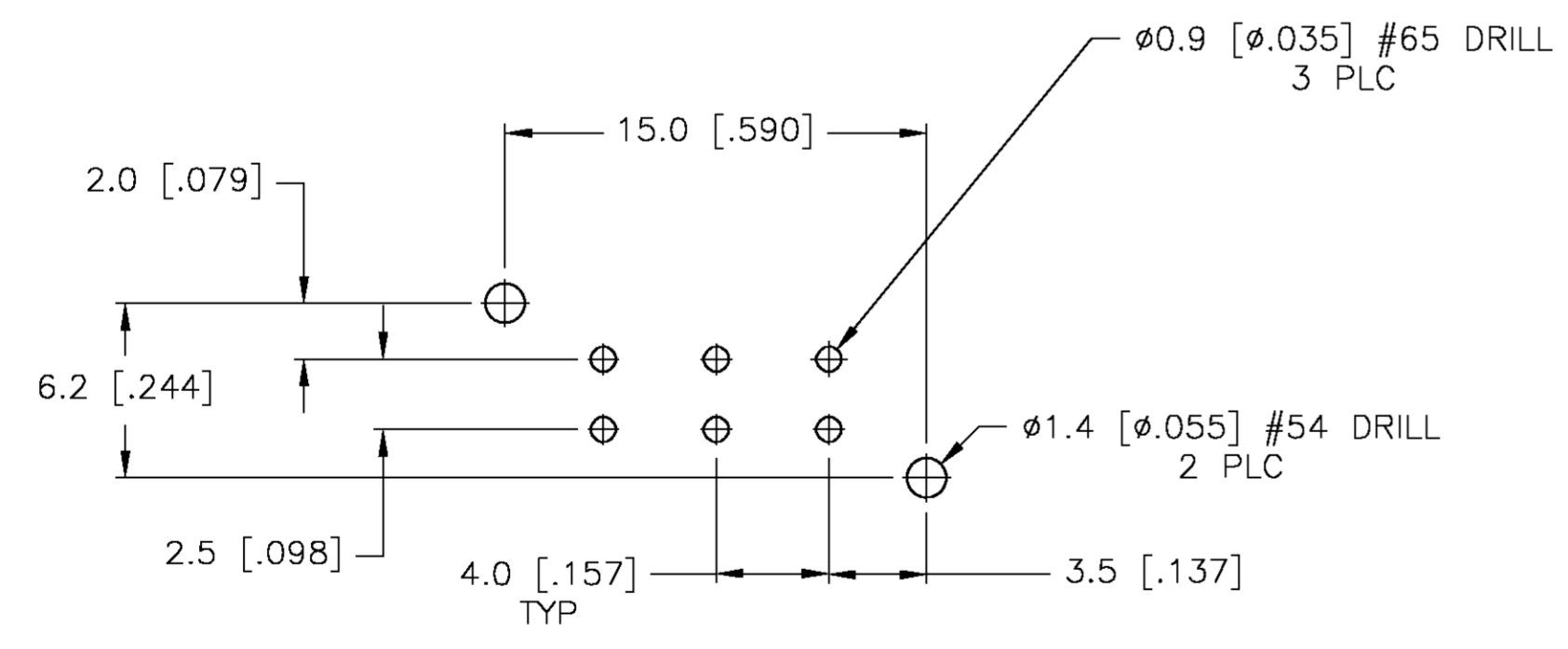
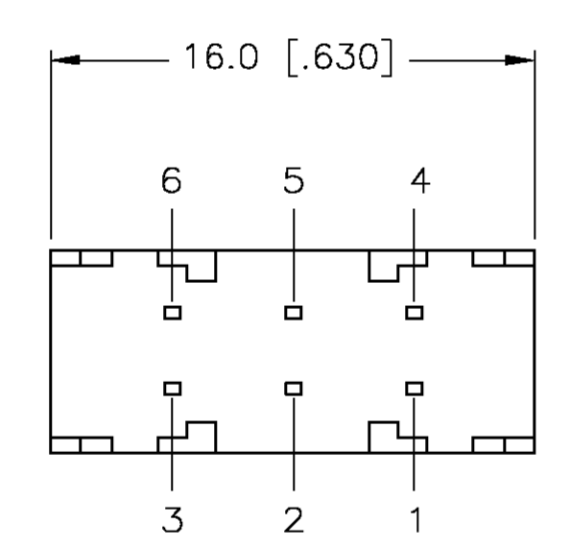
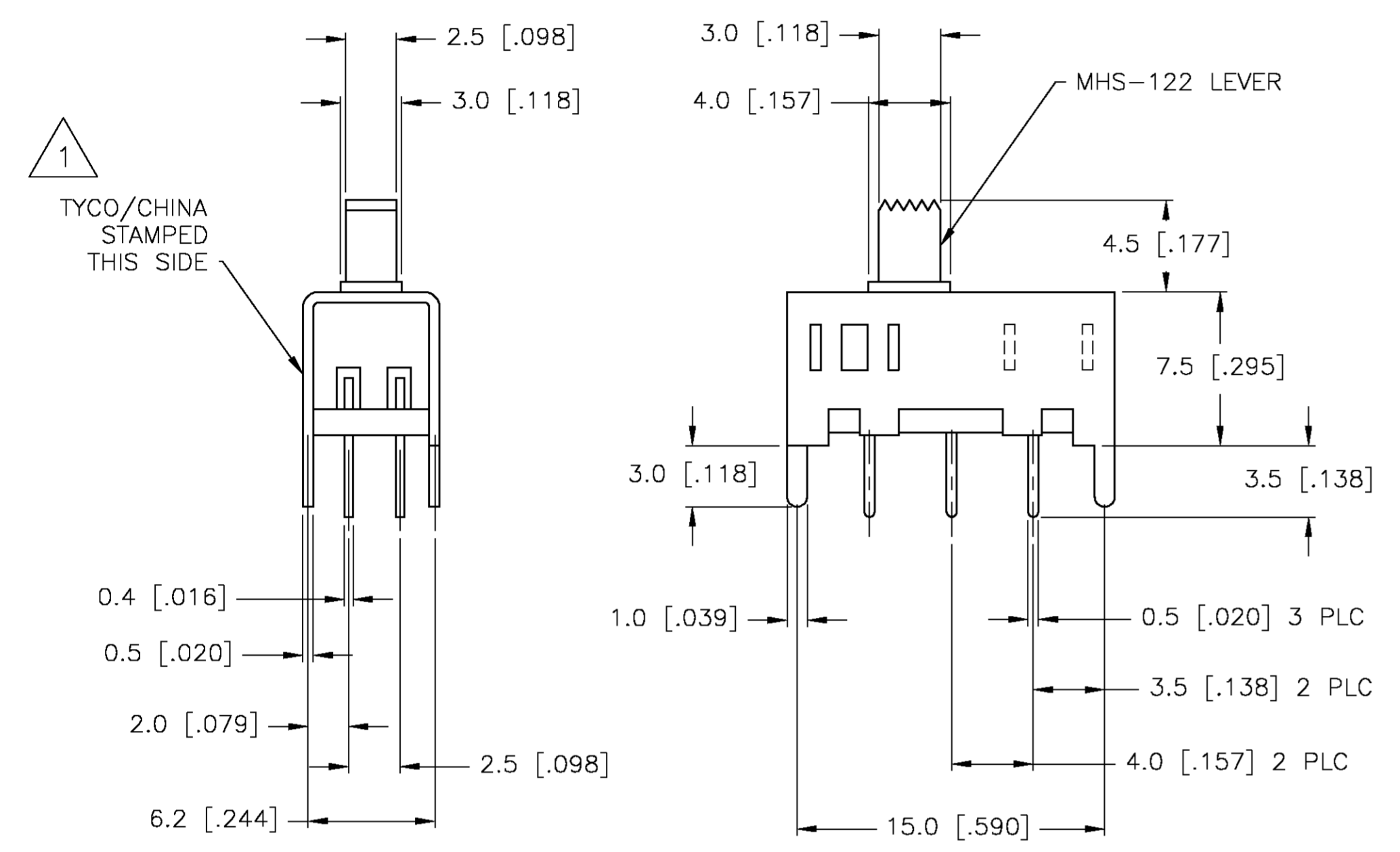
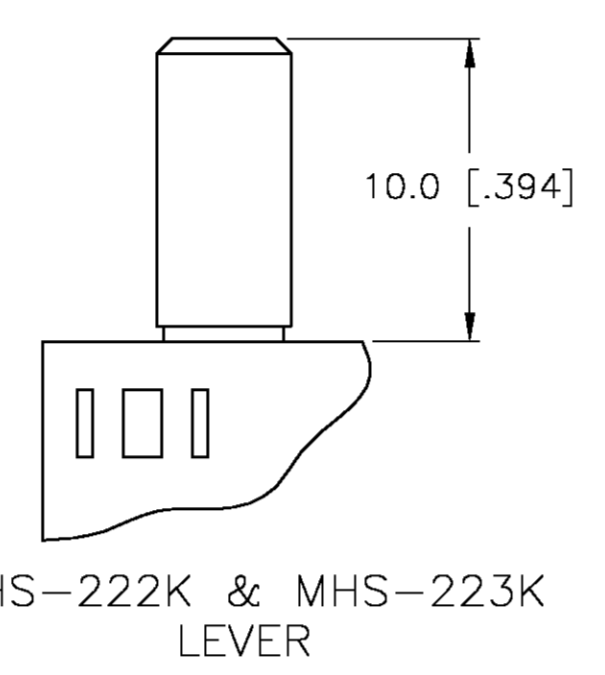
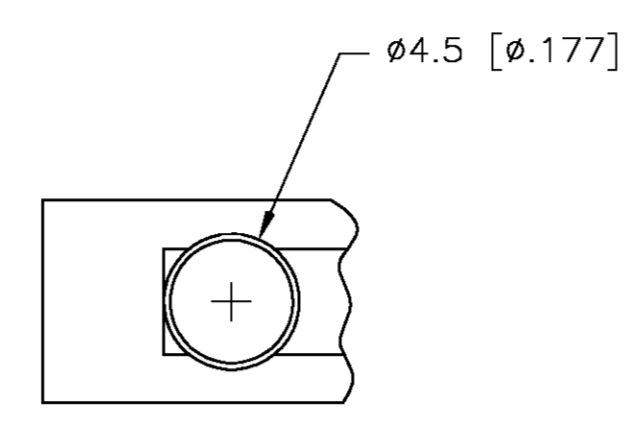
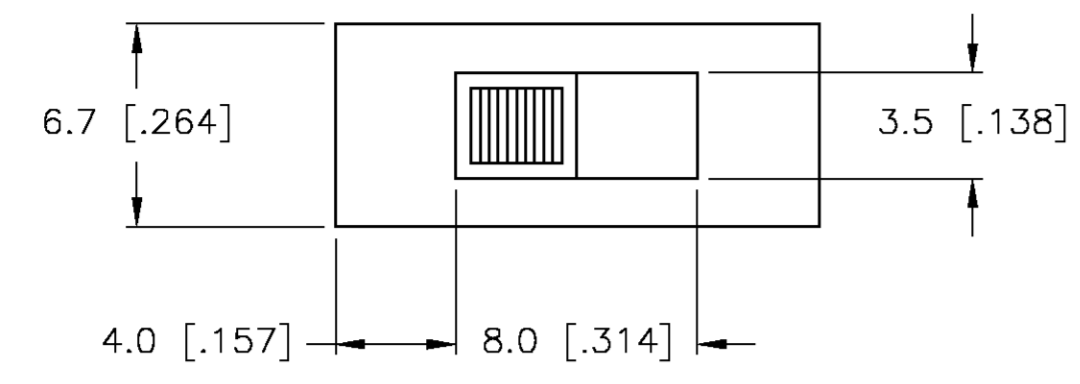
Materials:  
 Actuator- POM, UL94-HB(Black)  
 Board- Phenolic Laminated Sheet, UL94-HB(Natural)  
 Frame- Steel, Nickel plate  
 Terminal- Copper Alloy, Silver or Gold over Nickel plate  
 Ball- Steel  
 Coil Spring- Blackened spring wire  
 Moving Contact- Copper Alloy, AG Clad or AU/NI plate  
 Lever (K series)- Aluminum  
 Seal- Epoxy

Electrical:  
 Contact Rating- 300mA@125VAC(Silver) or .4VA@20VDC or peak AC(Gold), Per EIA-448, Method 6  
 Initial Contact resistance- 20 milliohms max, Per EIA-364-23B, each position  
 Insulation Resistance- 1000 Megohm min. Per EIA-364-21C each position  
 Dielectric strength- 500 Volt AC, Per EIA-364-20B, Condition 1, each position.

Mechanical:  
 Actuation force- 250 +200/-150 GF  
 Actuation Travel- 2.0 [.079]  
 Life Expectancy- 15,000 cycles, Per EIA-448, Method 8 and 9  
 Vibration- Per EIA 364-28, Condition VII, Level E  
 Mechanical Shock- Per EIA-364-27, Condition A

Environmental:  
 Operating Temperature- -20 to + 100 degrees C, Per EIA 448, Method 10  
 Storage Temperature- -40 to + 100 degrees C  
 Humidity and Temperature Cycling- Per EIA-364-31B, Method III  
 Temperature Life- Per EIA-364-17B, Method B, Temperature Test Condition 3, Time Condition B  
 Thermal Shock- Per EIA-364-32C, -25 to 100 degrees C  
 Solderability- Per EIA-364-52, Class 2, Category 1, 95% Minimum coverage  
 Resistance to Solder Heat- Per EIA-364-56A, Procedure 3, Condition B  
 Mixed Flowing Gas- Per EIA-364-65A, Class IIIA, 20Days (Gold Plate only)

1 Mark per 202-37 specification, TYCO/CHINA minimum requirement.



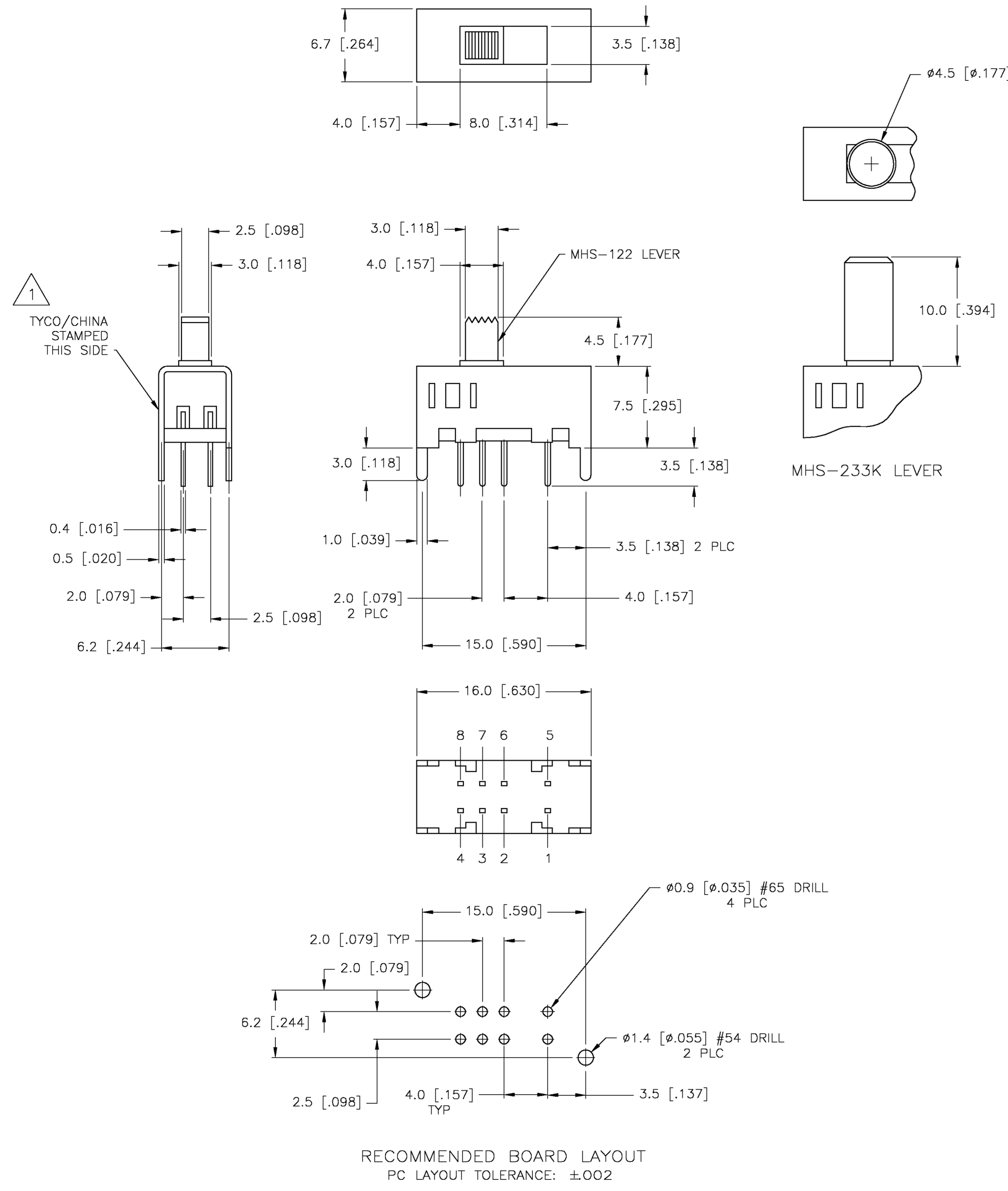
RECOMMENDED BOARD LAYOUT  
 PC LAYOUT TOLERANCE: ±.002

# MHS-222 & MHS-223 SERIES SWITCH

4-1437576-0	MHS233KG	DP3T	GOLD	-	6-5 2-1	-	7-6 3-2	-	8-6 4-2
3-1437576-9	MHS233K	DP3T	SILVER	-	6-5 2-1	-	7-6 3-2	-	8-6 4-2
3-1437576-7	MHS233G	DP3T	GOLD	-	6-5 2-1	-	7-6 3-2	-	8-6 4-2
3-1437576-6	MHS233	DP3T	SILVER	-	6-5 2-1	-	7-6 3-2	-	8-6 4-2
-	MHS223KG	DPDT	GOLD	5-4 2-1	-	OFF	-	6-5 3-2	-
3-1437576-4	MHS223K	DPDT	SILVER	5-4 2-1	-	OFF	-	6-5 3-2	-
3-1437576-2	MHS223G	DPDT	GOLD	5-4 2-1	-	OFF	-	6-5 3-2	-
3-1437576-1	MHS223	DPDT	SILVER	5-4 2-1	-	OFF	-	6-5 3-2	-
2-1437576-9	MHS222KG	DPDT	GOLD	5-4 2-1	-	NONE	-	6-5 3-2	-
2-1437576-8	MHS222K	DPDT	SILVER	5-4 2-1	-	NONE	-	6-5 3-2	-
2-1437576-6	MHS222G	DPDT	GOLD	5-4 2-1	-	NONE	-	6-5 3-2	-
2-1437576-5	MHS222	DPDT	SILVER	5-4 2-1	-	NONE	-	6-5 3-2	-
TYCO PART NO.	T&B PART NO.	TYPE	PLATING						

TERMINALS CONNECTED WHEN SLIDE IS IN POSITION SHOWN.

THIS DRAWING IS A CONTROLLED DOCUMENT.		DIN R BROWN 20MAY03	Tyco Electronics Corporation Harrisburg, PA	
DIMENSIONS: MM		CHK M SARVER 20MAY03	APVD M SARVER 20MAY03	
TOLERANCES UNLESS OTHERWISE SPECIFIED:		NAME: SLIDE SWITCH, MHS SERIES, DOUBLE POLE, VERTICAL		
0 PLC ± -	1 PLC ± 0.3 [.012]	PRODUCT SPEC		
2 PLC ± -	3 PLC ± -	APPLICATION SPEC		
4 PLC ± -	ANGLES ± 1°	FINISH		
MATERIAL	FINISH	SIZE	CAGE CODE	DRAWING NO
-	-	A1	00779	2-1437576-5
CUSTOMER DRAWING		SCALE	SHEET	REV
		4:1	1 OF 2	F



MHS-233 SERIES SWITCH

THIS DRAWING IS A CONTROLLED DOCUMENT.		DIN R BROWN 20MAY03	Tyco Electronics Corporation Harrisburg, PA
DIMENSIONS: MM		CHK M SARVER 20MAY03	
TOLERANCES UNLESS OTHERWISE SPECIFIED:		APVD M SARVER 20MAY03	NAME
0 PLC ± -	1 PLC ± 0.3 [.012]	PRODUCT SPEC	SLIDE SWITCH, MHS SERIES, DOUBLE POLE, VERTICAL
2 PLC ± -	3 PLC ± -	APPLICATION SPEC	SIZE CAGE CODE DRAWING NO
4 PLC ± -	ANGLES ± 1°	WEIGHT	A1 00779 C=2-1437576-5
MATERIAL	FINISH	CUSTOMER DRAWING	RESTRICTED TO
		SCALE 4:1	SHEET 2 OF 2 REV F